

**VIVE LA ROSE**  
*(Long Live The Roses)*

Mon amant me délaisse  
O gué, vive la rose

**CHOIRS :** **My lover doesn't call me**  
**Yeah hey, long live the roses**

Je ne sais pas pourquoi  
Vive la rose et le lilas

**CHOIRS :** **I really don't know why**  
**Vive la rose et le lilas**

Il va-t'en voir une autre  
O gué, vive la rose

**CHOIRS :** **He goes to see another**  
**Yeah hey, long live the roses**

Ne sait s'il reviendra  
Vive la rose et le lilas

**CHOIRS :** **But will he still be mine**  
**Vive la rose et le lilas**

On dit qu'elle est très belle  
O gué, vive la rose

**CHOIRS :** **She's said to be a beauty**  
**Yeah hey, long live the roses**

Bien plus belle que moi  
Vive la rose et le lilas

**CHOIRS :** **More beautiful than I**  
Vive la rose et le lilas

On dit qu'elle est malade  
O gué, vive la rose

**CHOIRS :** **She's said to be quite sickly**  
**Yeah hey, long live the roses**

Peut-être qu'elle en mourra  
Vive la rose et le lilas

**CHOIRS :** **That maybe she will die**  
Vive la rose et le lilas

Si elle meurt dimanche  
O gué, vive la rose

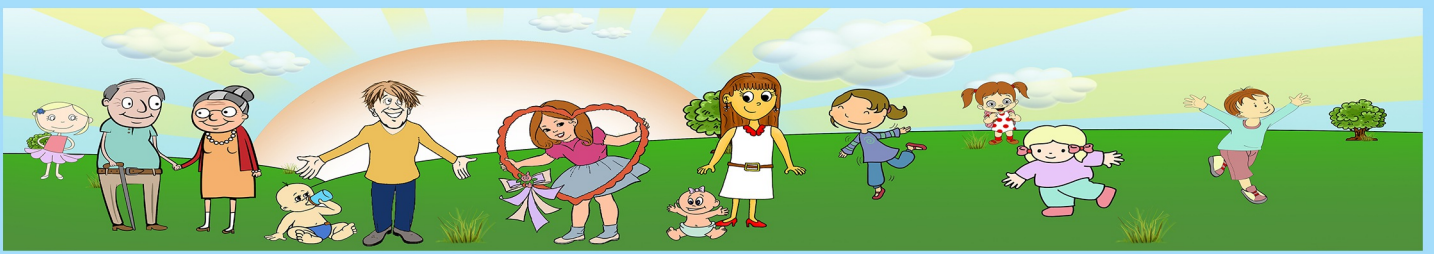
**CHOIRS :** **And if she dies on Sunday**  
**Yeah hey, long live the roses**

Lundi on l'enterrera  
Vive la rose et le lilas

**CHOIRS :** **Just one day we will cry**  
Vive la rose et le lilas

Lundi on l'enterrera  
Vive la rose et le lilas

**CHOIRS :** **Just one day we will cry**  
Vive la rose et le lilas



# VIVE LA ROSE

## (Long Live The Roses)

Ab Db Eb Ab Ab

4 Db Ab Ab Db Ab

7 Fm Bbm Eb Ab Fm Bbm

10 Eb Ab Eb E

14 A D A A

17 D A F#m Bm E A

20 F#m Bm E A E

23 E F Bb

Detailed musical score for 'Vive La Rose' in 4/4 time. The score consists of eight staves of music. The key signature is three flats (B-flat major/D-flat minor). The first staff starts with a 4-measure rest followed by a melodic line. The second staff continues the melody. The third staff includes a 2-measure rest at the end. The fourth staff features a first ending (1.) in 2/4 time and a second ending (2.) in 4/4 time, both leading to a key change to E major. The fifth staff continues in E major. The sixth staff continues the melody. The seventh staff includes a first ending (1.) in 2/4 time and a second ending (2.) in 4/4 time. The eighth staff continues in E major and ends with a key change to B-flat major.

26 Eb Bb Bb Eb Bb

29 Gm Cm F Bb Gm Cm

32 F Bb Gm Cm F Bb

35 Gm Cm F Eb F Bb

*Tablature*

